

Photocontrol - Stem and Swivel Mount Thermal Photocontrol, 120-277 V

Item K4236C



PRODUCT DESCRIPTION

These photocontrols are provided with a swivel arm for easy and flexible installation to standard outdoor light fixtures or electrical boxes.

FEATURES

- ▶ Mechanical bimetal switch with Cadmium Sulfide photocell
- ▶ Delay feature prevents unwanted OFF switching
- ▶ High strength, UV resistant plastic housing
- ▶ Swivel with 1/2"-14 NPSM threaded stem
- ▶ Washer gasket and locking nut included
- ▶ #18 AWG, 6" wire leads

APPLICATIONS

- ▶ Parking Lot Lighting
- ▶ Landscape Lighting
- ▶ Exterior Lighting
- ▶ Street Lighting
- ▶ Pedestrian Pathway Lighting

TECHNICAL DATA

General

Model Number	K4236C
Description	Stem and Swivel Mount Thermal Photocontrol, 120-277 V
UPC Code	078275029606
Brand	Intermatic
Country of Origin (Intermatic)	MEXICO
Warranty	2-Year limited
Usage Environments	Outdoor
Photocontrol Type	Thermal
Expected Lifetime (Years)	5
Expected Lifetime (Operations)	3650
Application Compatibilities	Fluorescent; HID; Incandescent
Photocontrol Style	Stem; Swivel Mount
Photocontrol Sensor Location	Side

Control Specifications

Sensor Time Delay	30 sec to 90 sec
Photocell Type	Cadmium Sulfide
Photo Control Switch Type	Mechanical Bimetal
Fail Mode	ON
Activation On	1.5 fc
Activation Off	3 to 15 fc

Dimensions

Product Width (in)	1 9/16
Wire Lead Length (in)	6

Wire Size Max #18 AWG

Material Specifications

Cover Color Gray
Housing Material Polycarbonate

Load Ratings

Magnetic Ballast Range(s) 8.3 A, 1000-2300 VA
Tungsten Range(s) 15 A, 1800-4150 W

Electrical Specifications

Input Voltage Range(s) 120-277 VAC, 50/60 Hz

Packaging

Shipping Weight (lbs) 0.449
Unit Carton Height (in) 5.75

Environmental Specifications

Temperature (operation) -40°C..70°C

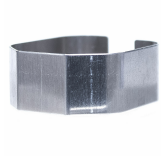
Standards and Certifications

UL Certification UL
CSA Certification cCSAus
Other Certifications and Compatibilities CA Title 20; Ansi C136.10
California Proposition 65 DEHP

ACCESSORIES



K42-SW-A
Swivel Arm



22LG116
Replacement Light Guard for Thermal Photocontrols
(K4100 and K4200 Series)



6LV1352
Light Shield for Button Photocontrol (K4000 Series,
K4321, K4400 Series, EK4036S, EK4336S, EK4436SM)