

# MODEL: T174CR

## 24 HR DIAL TIME SWITCH WITH "SKIPPER®" AND SPRING-WOUND CARRY-OVER MOTOR



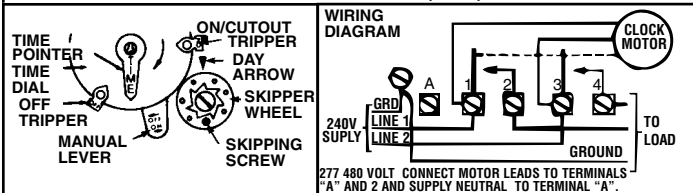
DOUBLE POLE SINGLE THROW (DPST)

IN TYPE 3R RAINPROOF ENCLOSURE.

40 AMP. RESISTIVE, EACH POLE 120-480 VOLT A.C. 40 AMP INDUCTIVE, OR  
TUNGSTEN OR 1000 VA. PILOT DUTY EACH POLE - 120V -277V AC;  
2 HP (24 FLA) - 120V AC; 5 HP (28 FLA) - 240V AC.

### CLOCK MOTOR: 208-277 VOLTS - 60 HZ.

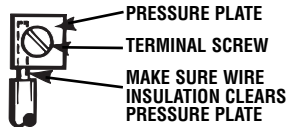
**CLOCK MOTOR VOLTAGE AND CYCLE MUST BE AS SPECIFIED. TO  
ORDER REPLACEMENT, INDICATE ART NO. (WG--) ON MOTOR COVER.**



**WIRING INSTRUCTIONS:** To wire switch follow diagram above. Use solid or stranded COPPER only wire with insulation to suit installation. See gauge selection table for normal service applications. To make power connections remove 1/2 inch of insulation from wire ends. Insert bare ends of wire under the pressure plate of terminals. Use 3/16 or larger screwdriver to tighten terminal screws firmly. (25 lb-in minimum).

**REPLACE INSULATOR BEFORE TURNING ON ELECTRICITY.**

MINIMUM COPPER WIRE SIZE (AWG)	MAX. LOAD (AMP)	MIN. INSUL- ATION TEMP(°C)	75°C INSULATION MAX. MOTOR LOAD (HP)			
			SINGLE PHASE		3 PHASE	
			120 V.	240 V.	208 V.	240 V.
14	15	60	1/2	2		
12	20	60	1	2 1/2		
10	30	60	2	3	N/A	N/A
8	40	75	-	5		



### PROGRAMMING INSTRUCTIONS

- TO SET "ON" AND "OFF" TIMES:** Hold trippers against edge of **CLOCK-DIAL**, pointing to time (AM or PM) when **ON** and **OFF** operations are desired, tighten tripper screws firmly. For additional tripper pairs on **CLOCK-DIAL** order 156T1978A.
- TO SET TIME-OF-DAY:** Pull **CLOCK-DIAL** outward. Turn in either direction and align the exact time-of-day on the **CLOCK-DIAL** (the time now, when switch is being put into operation) to the pointer. **DO NOT MOVE POINTER.**
- TO SKIP OPERATION(S) ON SELECTED DAY(S):** Insert **SKIPPING SCREW(S)** in **SKIPPER WHEEL** for day(s) automatic operation(s) is/are NOT required. Tighten screws firmly. Move **MANUAL LEVER** to "OFF" and rotate **SKIPPER WHEEL** to locate correct day-of-week opposite **DAY ARROW--"YESTERDAY"** if **ON/CUTOUT TRIPPER** has not yet advanced wheel "TODAY" if it has.

### OPERATING INSTRUCTIONS

- TO OPERATE SWITCH MANUALLY:** Move **MANUAL LEVER** below **CLOCK-DIAL** left or right as indicated by arrows. This will not effect next operation.  
**CAUTION: TO AVOID SLOW SWITCH ACTION FAILURE, DO NOT OPERATE SWITCH MANUALLY NOR PLACE A TRIPPER 4 HOURS PRIOR TO ON/CUTOUT TRIPPER SWITCHING.**
- IN CASE OF POWER FAILURE,** reset **CLOCK-DIAL** to proper time-of-day. See programming instructions.

**INTERMATIC INCORPORATED**  
SPRING GROVE, ILLINOIS 60081-9698