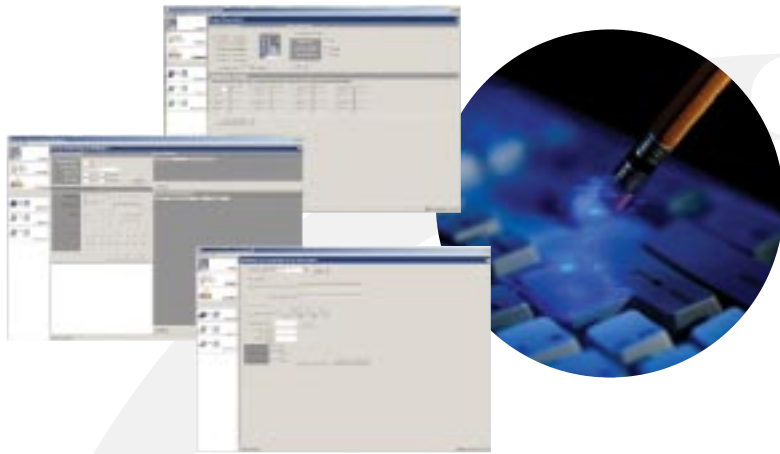


Next Generation Programming Software



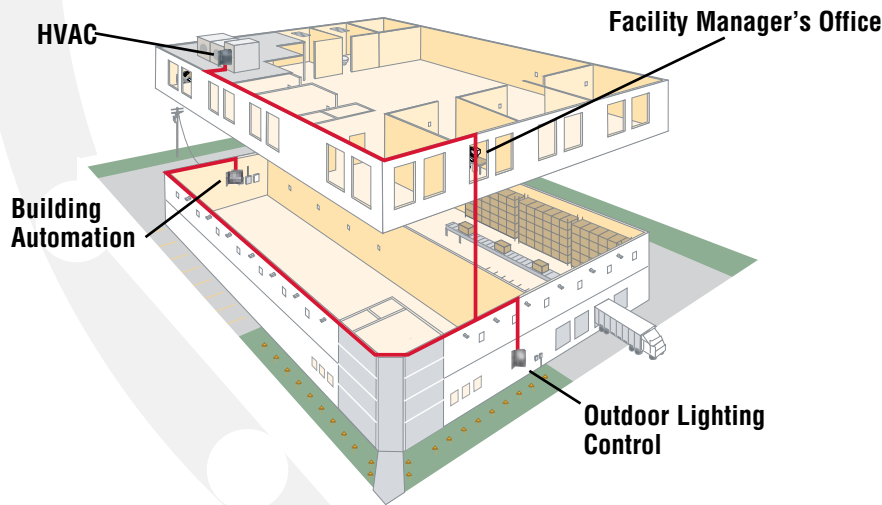
Unleash the Power of the Next Generation Time Switch!

The NextGen programming software written specifically for installing contractors and maintenance personnel is the fastest and easiest way to program the Intermatic Next Generation series of electronic time switches.

Features

- Programming of all current Next Generation models (1, 2, 4, 8, & 16 circuits)
- Easy point-n-click programming of holiday and daily event schedules
- File save function for archiving event schedules for future editing and use
- On-line help manual gives easy to follow directions
- One-button time and date programming synchronizes the time switch with your PC's date and time

Request Item# 300ET10018



Networking capabilities allow programming of the Next Generation time switches allowing facility managers to make schedule changes from across the building or campus through an intranet or even across country through the Internet.

NEXT GENERATION ACCESSORIES



ET7232M / ET7232M1

RS232 Serial Interface for all Next Generation Time switches. Also used as remote override for 1 & 2 circuit models.



156ET9402A

8-Circuit remote override input header. (Not Pictured)

156ET9403A

16-Circuit remote override input header.

LAN Connection to a PC

Office computers are typically connected through a local area networks (LANs) which provides an in-place backbone to allow control of Next Generation time switches from any linked PC. This applies to office buildings as well as distributed facilities such as university or corporate campuses.

NextGen Distributed Control

By linking distributed Next Generation time switches together with the facility manager's PC the time and associated cost of making periodic schedule changes is greatly reduced and all timing throughout the network can be synchronized to the second with the PC's internal clock.